

Kazuhide Shirota

GRAND SLAM

BH-155S

¥155,000

NECK:Maple,648mm-Scale,Bolt-On
FINGER BOARD:Maple,
22F.,350R

BODY:Soft Maple 45mm
PICK UP:FER-SI,VH-400
CONTROL:1Volume,3Way Mini
SW.,Sustainer Controls

BRIDGE:FRT-5PRO
(with Pitch-Shift Cavity)
FEATURES:FERNANDES Sustainer
COLOR:ZRD



BH-125

¥125,000

NECK:Maple,648mm-Scale,Bolt-On
FINGER BOARD:Maple,22F.,350R
BODY:Maple 15mm+

Mahogany 30mm
PICK UP:VH-7,VH-4
CONTROL:1Volume,3Way Mini-SW.
BRIDGE:FRT-5PRO
(with Pitch-Shift Cavity)
COLOR:STR

Hironori Yoshikawa

GRAND SLAM

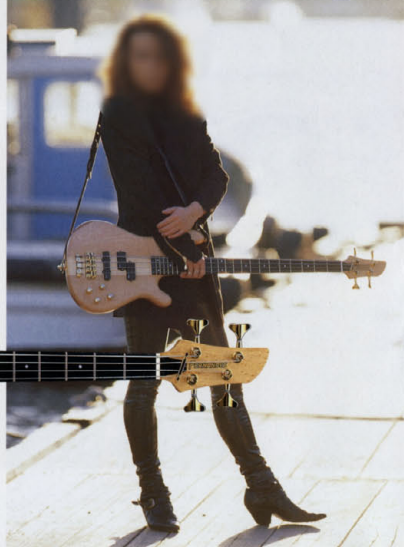
FRB-155B

¥155,000

NECK:Maple,864mm-Scale,
Through-Neck
FINGER BOARD:Ebony,24F.,350R
BODY:Maple 15mm+

Mahogany 30mm
PICK UP:FGI-PJ
CONTROL:1Volume,1Balancer,
1Trebble,1Bass

BRIDGE:Warwick-4
FEATURES:Active Tone
Control New TC 9500
COLOR:ON



Norio Toshiro

ZIGGY

ZB-85

¥85,000

NECK:Maple,864mm-Scale,Bolt-On
FINGER BOARD:Rosewood,
22F.,350R

BODY:Sen 45mm
PICK UP:FGI-HB x2
CONTROL:1Volume
BRIDGE:BB-7
COLOR:IBS



MUSICIAN'S MODEL